








Building a resilient automotive supply chain

Bolstering and protecting margins by enabling capabilities to absorb, adapt, and recover from supply chain disruptions.

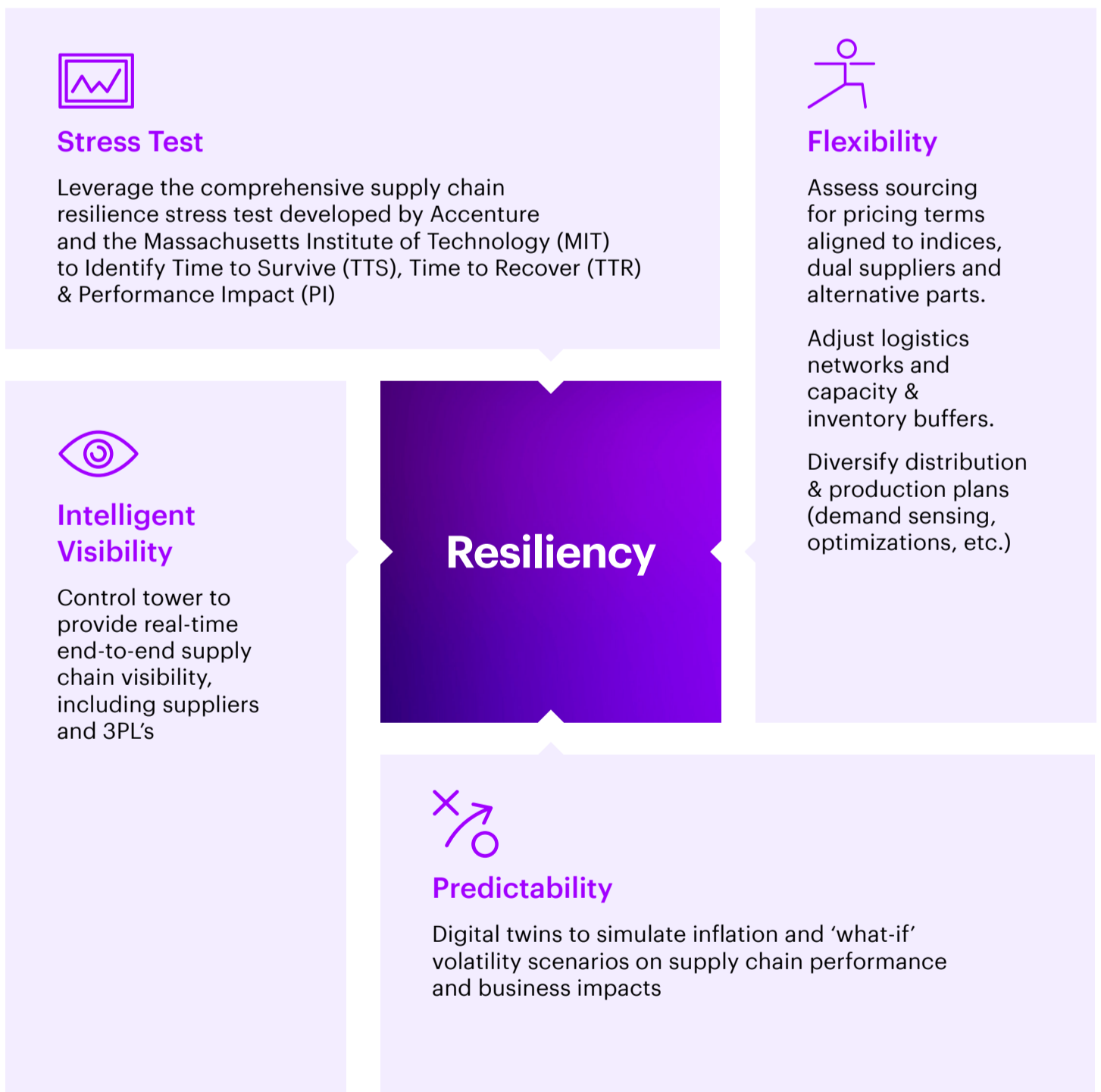
Value lever impacts

↑ Revenue/Margin	↓ COGS/OPEX
 Mitigate Lost Sales	 Increase Operational Time, Takt Time Stability & Capacity Utilization
 Optimize Margins on Constraint Availability	 Reduce Administrative Costs (Labor, Opportunity)
 Minimize Impact of De-Contenting Features	 Reduce Material & Inventory Premium Cost
	 Reduce Distribution & Stock Transfer Costs

Enabling supply chain resilience

Functions	SAP Solutions
<ul style="list-style-type: none"> Logistics & Distribution Manufacturing & Operations Supply Chain Planning Sourcing & Procurement Finance/Revenue Management Engineering/Product Planning 	<ul style="list-style-type: none"> SAP Ariba SAP Integrated Business Planning (IBP) SAP S/4HANA SAP Intelligent Asset Management (IAM) SAP Business Technology Platform (BTP) SAP Analytics Cloud (SAC)

Absorb, react and recover



Contact us to learn more:



Eric Mokrenski
 Managing Director
 North America Automotive
 Strategy Lead
 Accenture



Jim Sourges
 Managing Director, SAP
 Integrated Platform Team
 Lead, Mobility & Industrial
 Accenture

